

EU Energy Poverty Advisory Hub

Miguel Macias Sequeira, CENSE FCT-NOVA

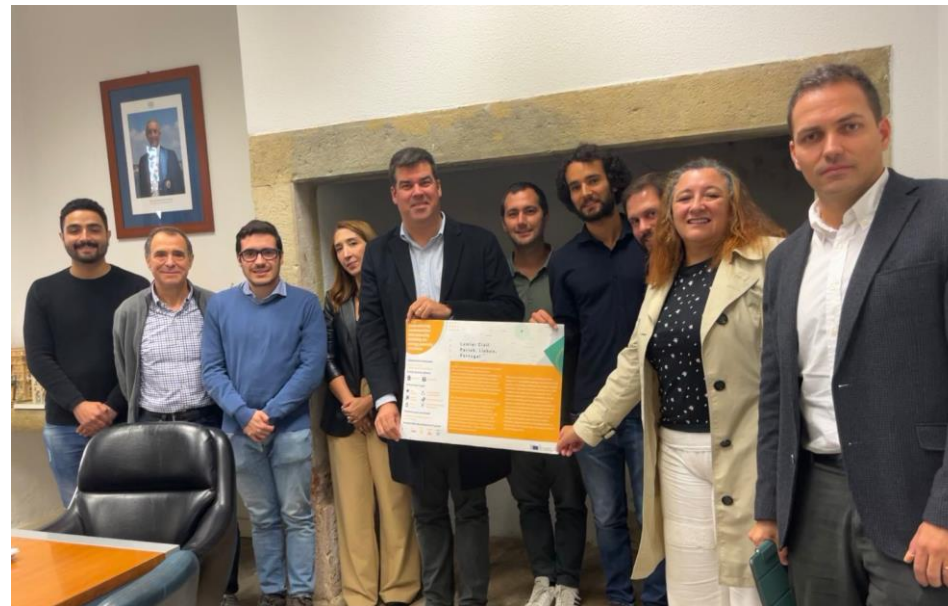
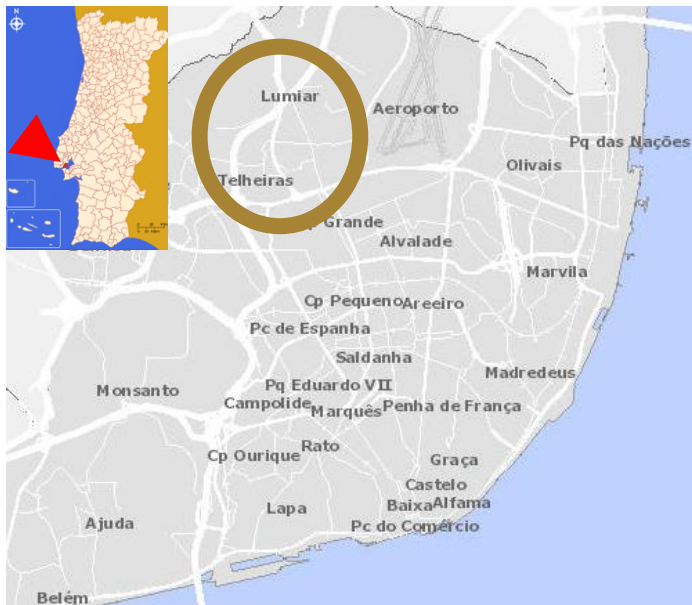


Telheiras Renewable Energy Community (Lumiar, Portugal)

□ *Goal: setting-up one of the first citizen-led and inclusive renewable energy communities in Portugal, tackling energy poverty and promoting energy democracy.*

□ *Consortium: Lumiar Civil Parish, Local Partnership of Telheiras, Coopérnico, CENSE FCT-NOVA.*

□ *Duration of the technical assistance: from October 2022 to July 2023.*



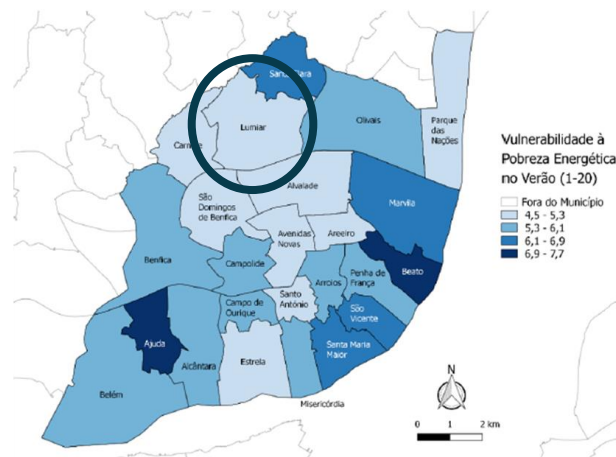
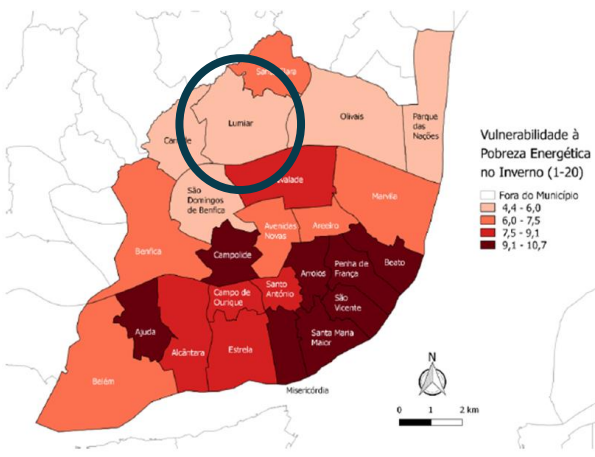
Tasks supported during EPAH's technical assistance

Energy Poverty Diagnosis

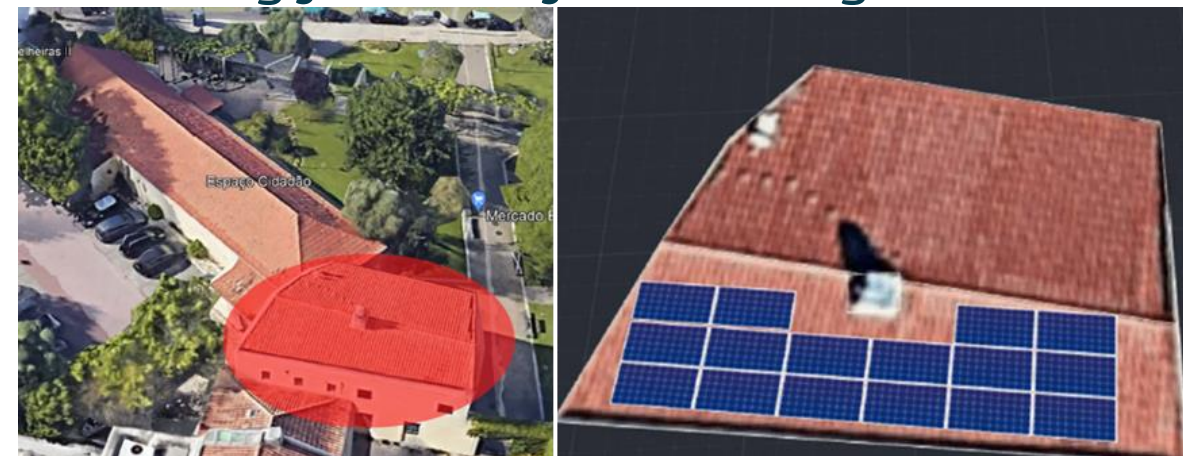
- ❑ Energy poverty vulnerability diagnosis for Lumiar and Lisbon using CENSE FCT-NOVA's index, based on buildings' energy consumption and population's socio-economic characteristics.

Solar Photovoltaic Sizing

- ❑ Pilot project with 16 solar PV panels (7.4 kWp) enough for 17 energy community members (1 civil parish, 13 local families, 3 energy-poor families).
- ❑ PV sizing for other five buildings.



Palma and Gouveia, 2022

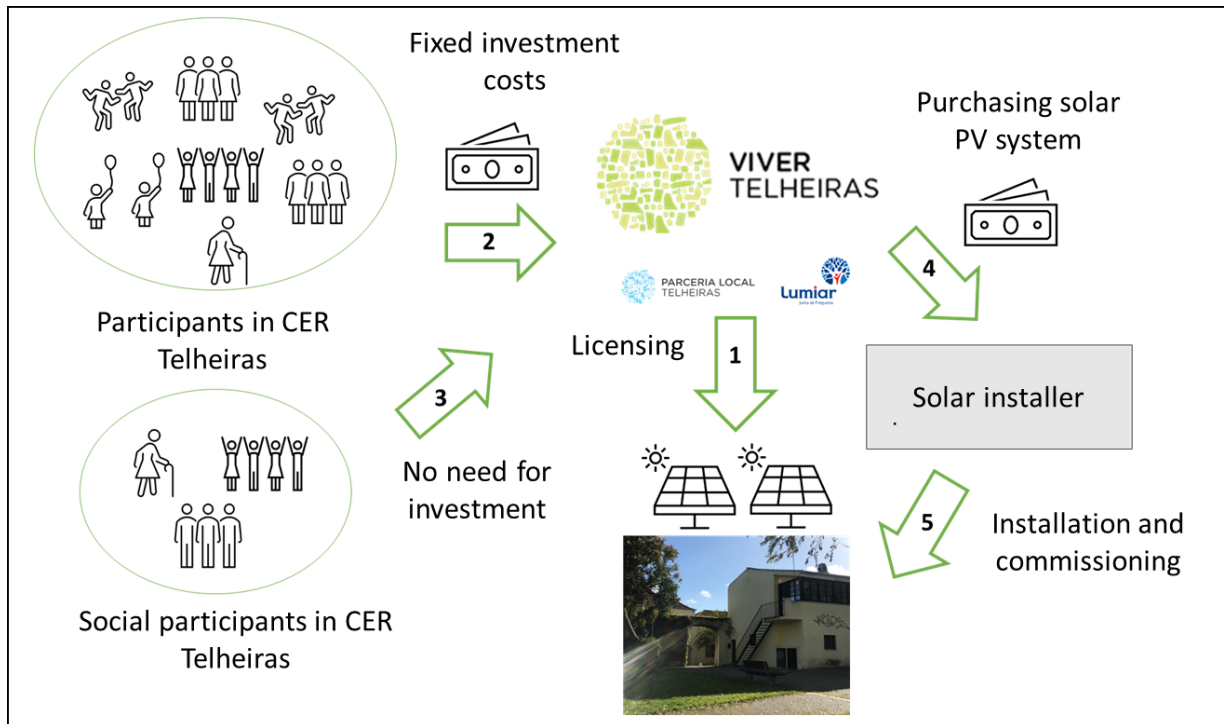


Coopérnico (2022) and Evandro Ferreira (2023)

Tasks supported during EPAH's technical assistance

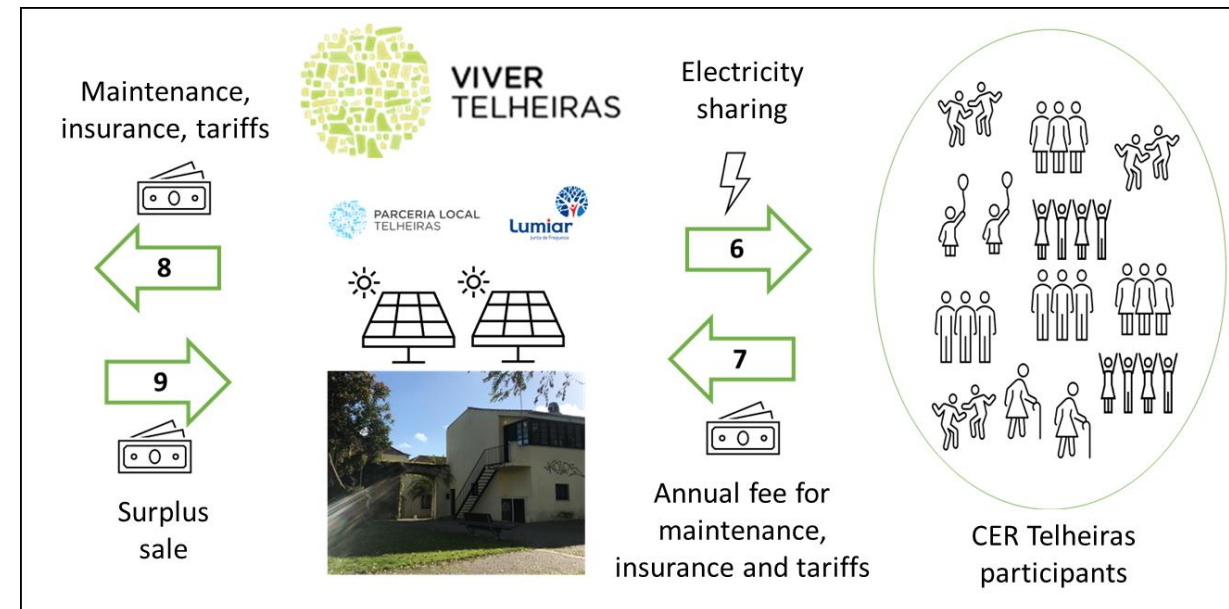
Financial and Operational Model Installation Phase

☐ Energy-poor families do not need to make the initial investment.



Financial and Operational Model Operation Phase

☐ Energy-poor families have a reduced annual membership fee.



Tasks supported during EPAH's technical assistance

Legal Entity and Internal Regulations

- ❑ Legal entity: non-profit association
- ❑ Regulations defining electricity sharing coefficients, conditions to join and leave, among other rules, and establishing that members have equal voting rights in general assemblies.

Communication and Member Recruitment

- ❑ Local stakeholder network.
- ❑ Regular presence in local events, public sessions and articles in media.
- ❑ Informative guide and other dissemination materials (e.g. flyers).
- ❑ Successful recruitment of participants.



Tasks supported during EPAH's technical assistance

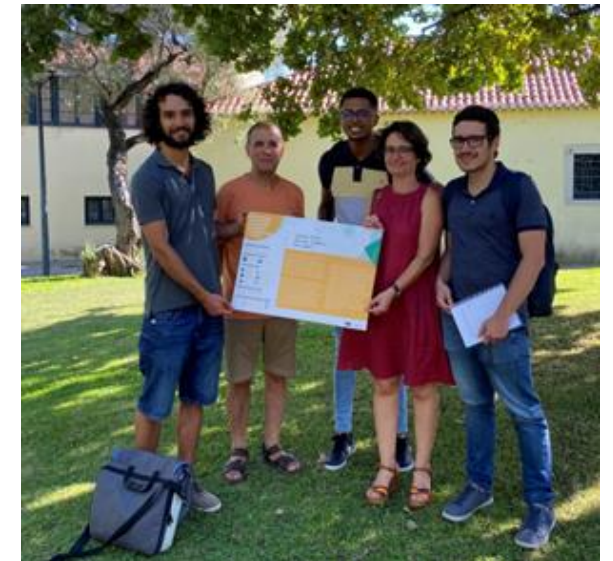
Energy-poor Families Integration

- ❑ To be identified by the Lumiar Parish, as they already receive social support.
- ❑ To be engaged by the social assistants, whom they already trust.
- ❑ Active decision to join and equal voting rights, promoting social inclusion



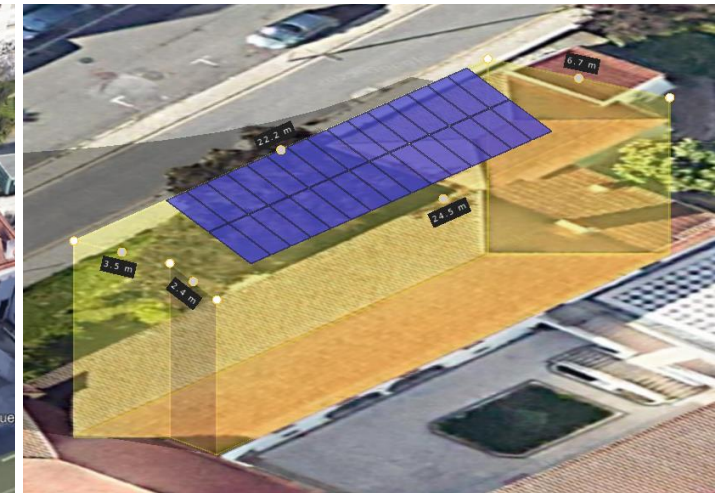
Licensing

- ❑ Licensing process ongoing since early 2023 with the Lisbon Municipality.
- ❑ Licensing process with the national authority started on June 2023.



Next steps for the Telheiras Renewable Energy Community

- ❑ *Conduct the first general assembly and approve the regulations.*
- ❑ *When licensing is complete, install solar PV system and start operation.*
- ❑ *Fill-in the pre-reserved membership spots for energy-poor families.*
- ❑ *Upscale through a second solar system installation and new member recruitment.*



Evandro Ferreira (2023)

Learnings from the process

- ❑ *Weak social movements, dependent on volunteers and with low energy literacy → **engage with a network of local partners and build on existing dynamics.***
- ❑ *Insufficient information and lack of knowledge → **provision of targeted support to citizens' groups, associations, and local governments.***
- ❑ *Financing difficulties, especially for energy-poor families → **dedicated financing for non-profit energy communities and/or that include energy-poor households.***
- ❑ *Bureaucratic and slow licensing process lacking transparency and accountability.*

“Without targeted support and finance citizen-led energy communities will not spontaneously generate!”





THANK YOU

@ m.sequeira@campus.fct.unl.pt

W <https://www.cense.fct.unl.pt/>

🐦 @MMaciasSequeira

in www.linkedin.com/in/miguelmmsequeira