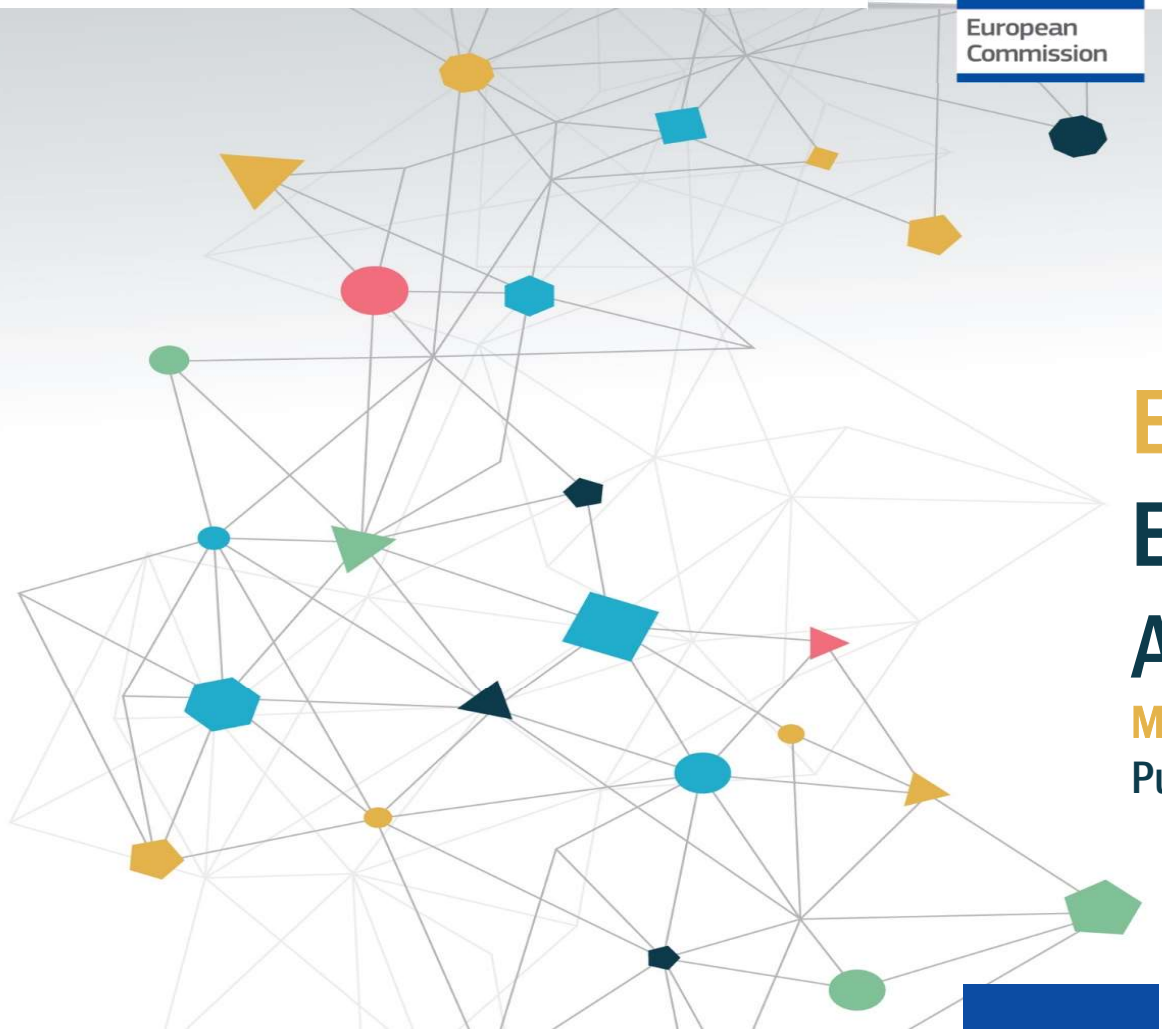




European
Commission



EU

Energy Poverty Advisory Hub

Marta Saiz Valverde

Public Land and Housing Company, Getafe



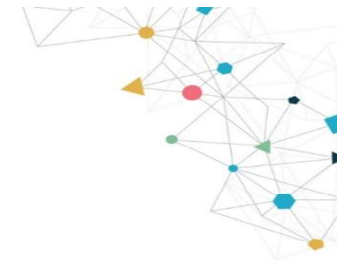
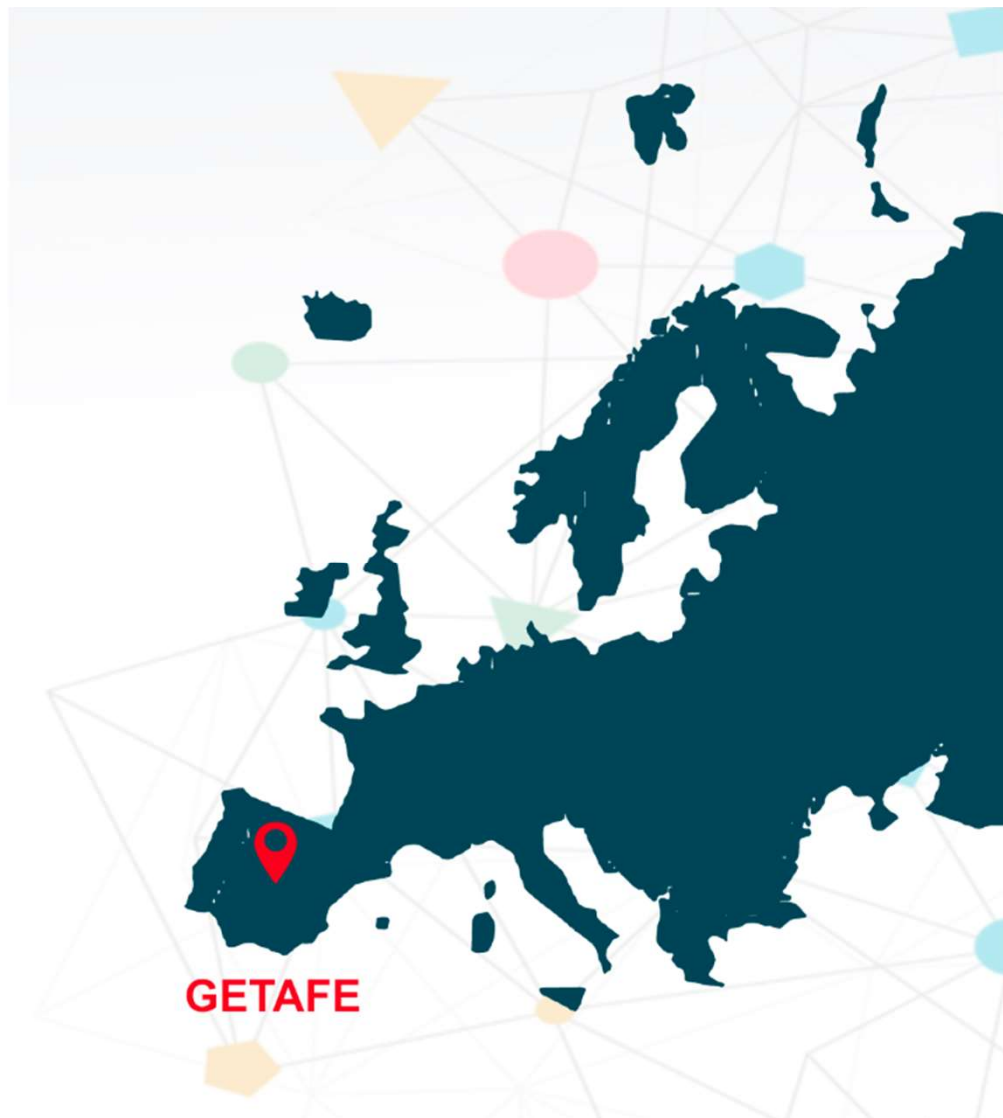
GETAFE
AYUNTAMIENTO

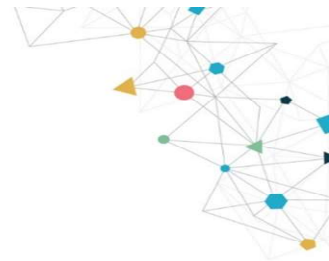
Empresa Municipal
SUELO Y VIVIENDA



GETAFE, SPAIN

"Unlocking potential:
New approaches to
skills for **energy**
poverty
eradication"





WHERE ARE WE WORKING?

TWO NEIGHBOURHOODS



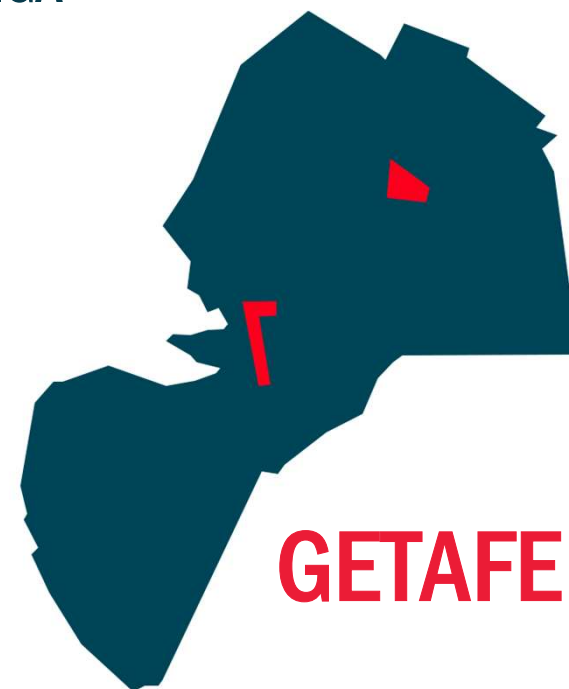
MARGARITA Y LA ALHÓNDIGA

Low incomes.

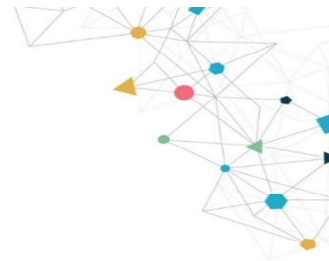
Low energy consumption.

High energy cost/income ratio.

Vulnerable population (elderly, migrant, disabled...)



GETAFE



MARGARITAS

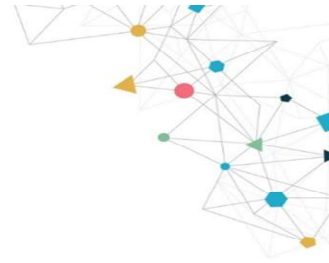


2.400 homes

ALHÓNDIGA



2.700 homes



A. How to improve skills on professionals:

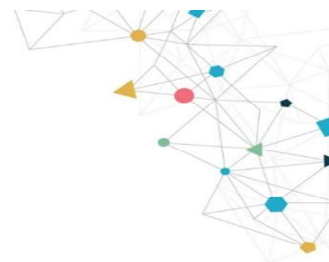
Three principal measures *to improve skills of professionals* :



1. TRAINING FOR THE CONSTRUCTION PROFESSIONALS

Training Paths. Training based on the most relevant tailor made solutions:

- *Thermal insulation in buildings and homes*
- *Energy efficiency*
- *Renewable energy*
- *Window installation*



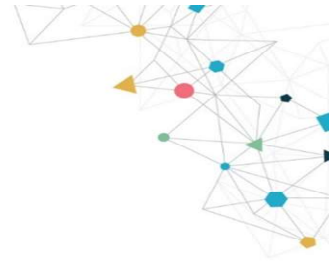
2. TRAINING FOR PUBLIC SERVICE HEALTHY HOMES OFFICE PERSONNEL

The training was provided by each of the project partners in their respective fields of expertise. Record and data management, energy efficiency, energy poverty, and citizen interaction.



3. TRAINING FOR MUNICIPAL OFFICIALS

Training for Municipal Officials on Energy Poverty and Big Data.

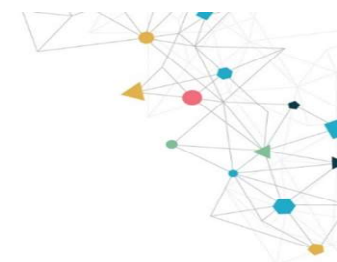


B. MAIN SUPPORTS REQUIRED BY PROFESSIONALS



PUBLIC SERVICE HEALTHY HOMES OFFICE

- Understanding of energy poverty.*
- Offices open to listen the problems of the citizens, specially within vulnerable people.*
- The use of the best tools to be more effective and efficient.*
- Tailor made solutions*



PRINCIPAL MILESTONE



PUBLIC SERVICE HEALTHY HOMES OFFICE

Link to relate every actor of the Project.

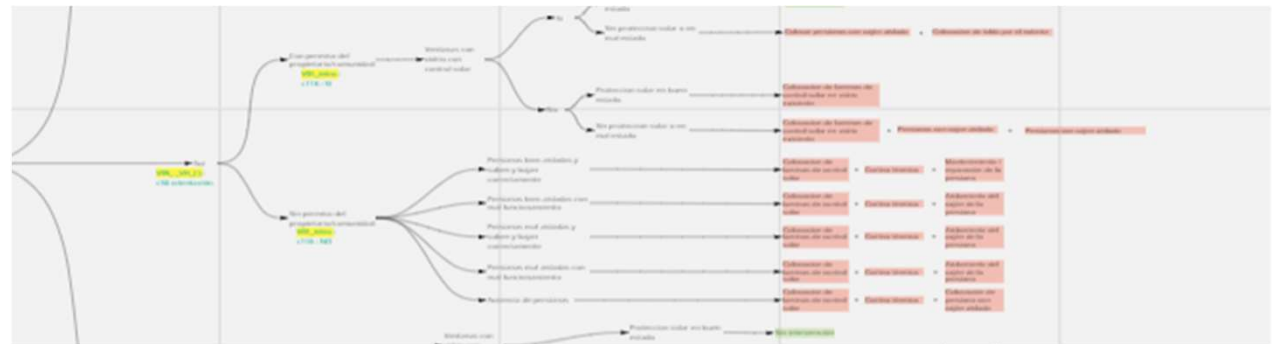
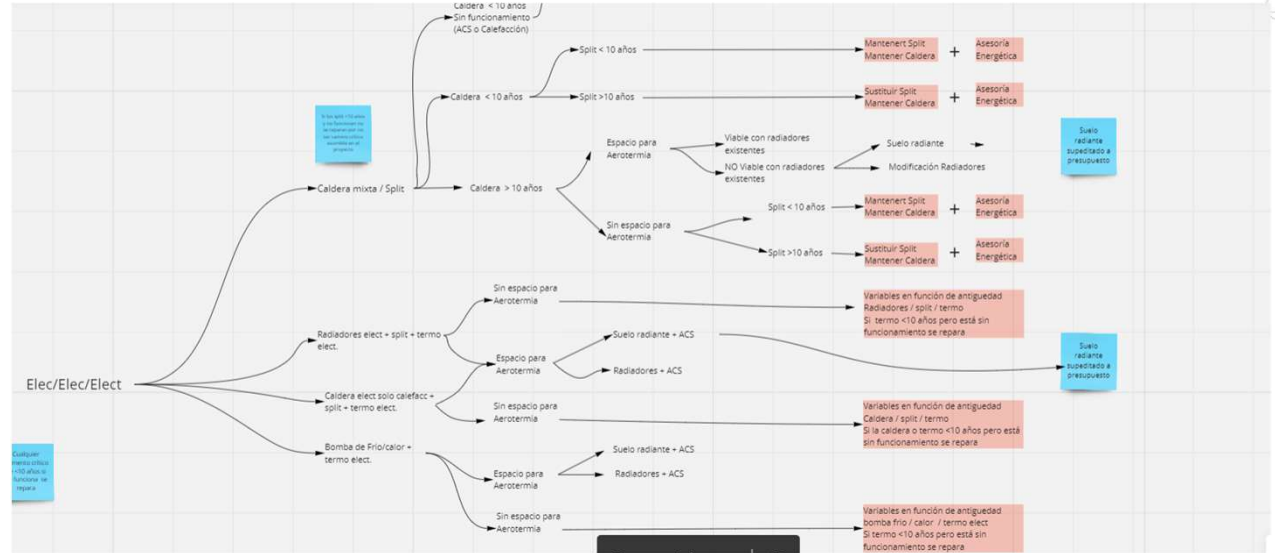
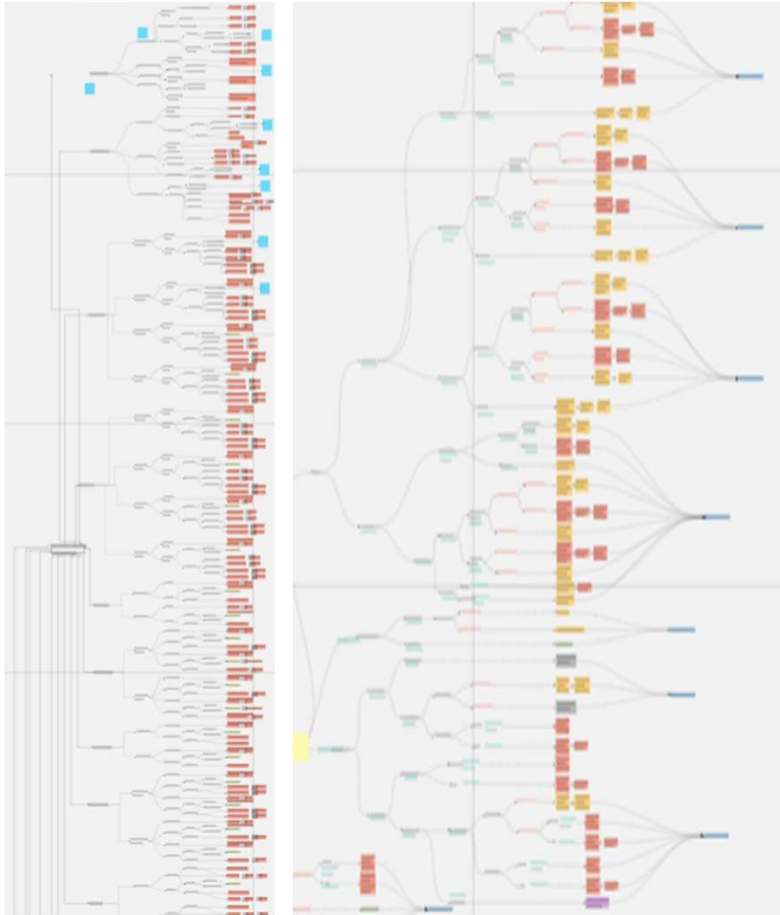
From just an input point to main point of merge of the actors of the project.

The Healthy Homes Office started the project as open to public office and data collection input. But currently the office has evolved as the link for citizens, data, city council, project partners and tailored solutions. This evolution and important role has been one of the most important milestones of the Project.



Taylor Made Solutions

"Decision trees."

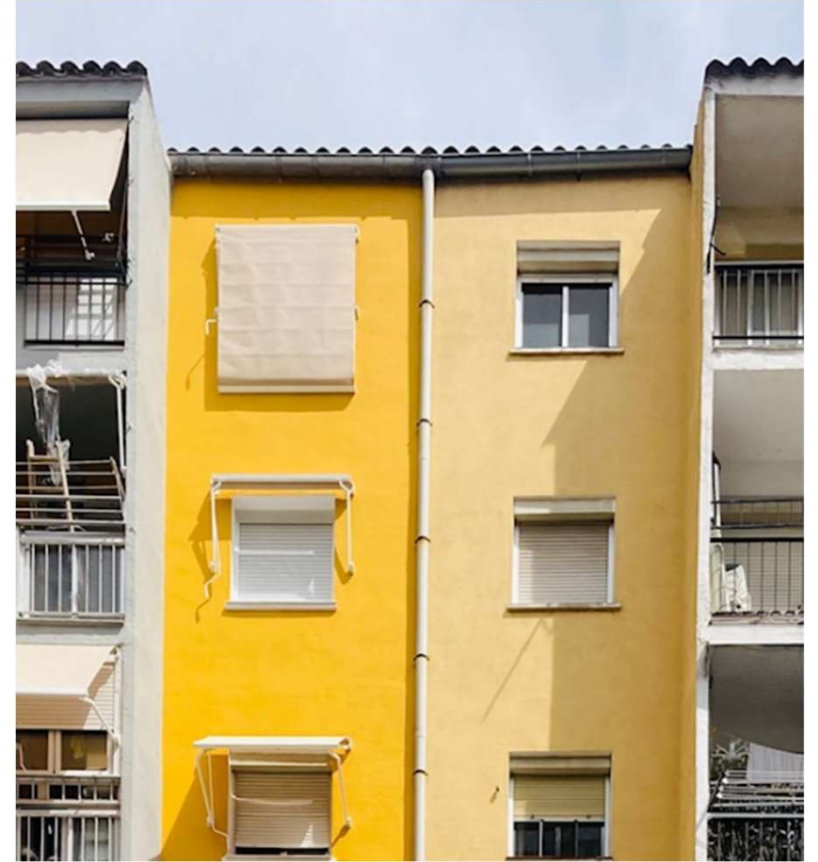


Empresa Municipal
SUELO Y VIVIENDA





EPIU BUILDING



GETAFE
AYUNTAMIENTO

Empresa Municipal
SUELO Y VIVIENDA



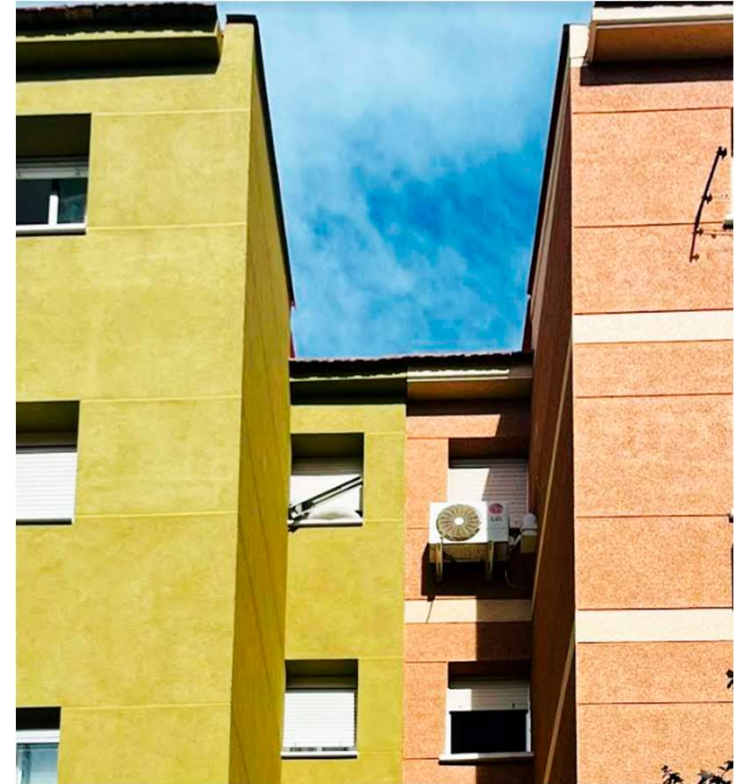
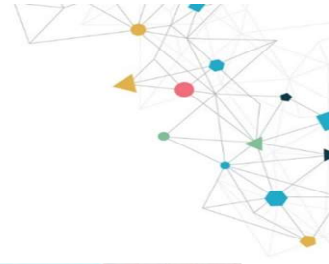
emsv



European
Commission



EPIU BUILDINGS



GETAFE
AYUNTAMIENTO

Empresa Municipal
SUELO Y VIVIENDA



emsv



European
Commission



EPIU NEIGHBORHOOD



GETAFE
AYUNTAMIENTO

Empresa Municipal
SUELO Y VIVIENDA



European
Commission



**EPIU
HOMES**



**Dramatic situation
of the visited
houses**



Empresa Municipal
SUELO Y VIVIENDA

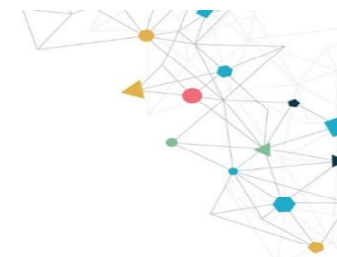


European
Commission



**EPIU
HOMES**

New windows, insulation injected into the interior wall cavities, and upgraded and more efficient boilers...



New
heating
Emitter
elements



Empresa Municipal
SUELO Y VIVIENDA

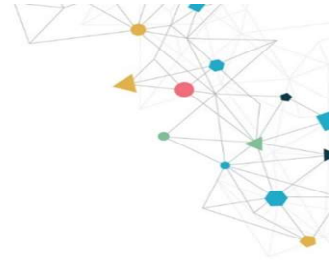


European
Commission



We accompany the most difficult procedures and help elderly and vulnerable people to fill out documentation.

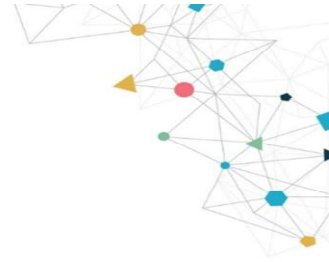
Personalized service





We move around all areas of the city to explain energy poverty and to be able to help as many vulnerable people as possible.

Getting closer to citizens

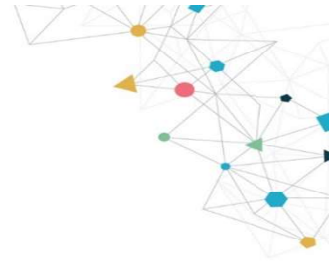


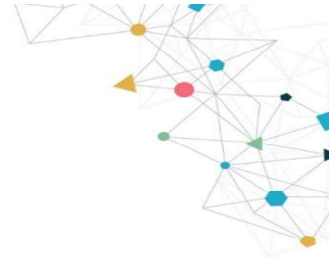


The more data is collected, the further the intelligent unit will develop, and the more we can help.

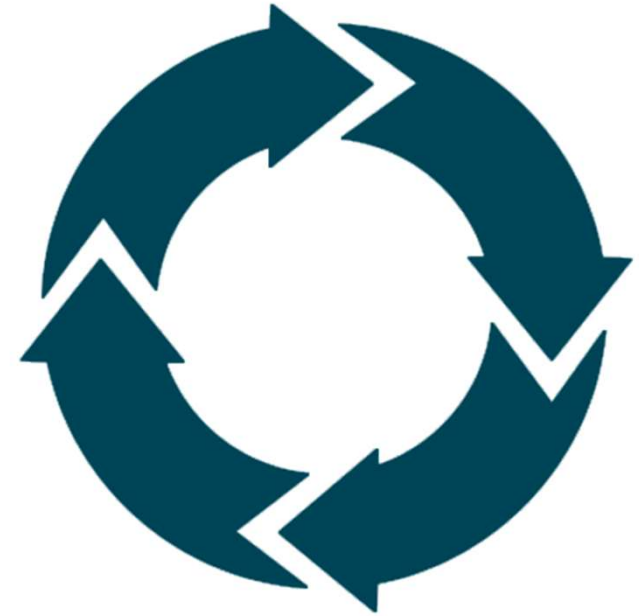


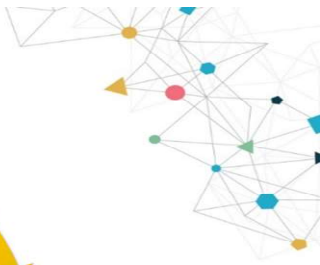
Data is also obtained through monitoring and evaluation



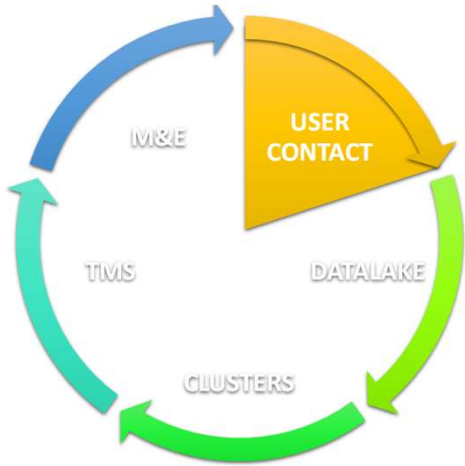


This is just the beginning
of an
ITERATIVE
process

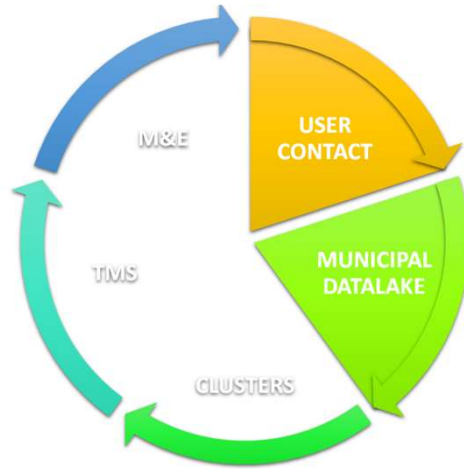




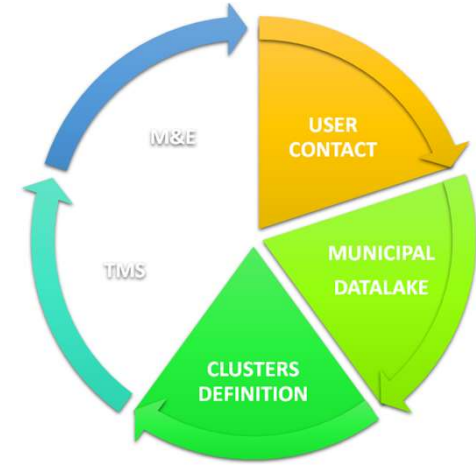
USER CONTACT



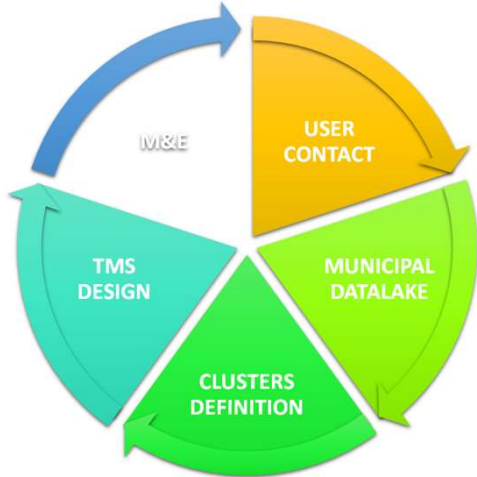
MUNICIPAL DATALAKE



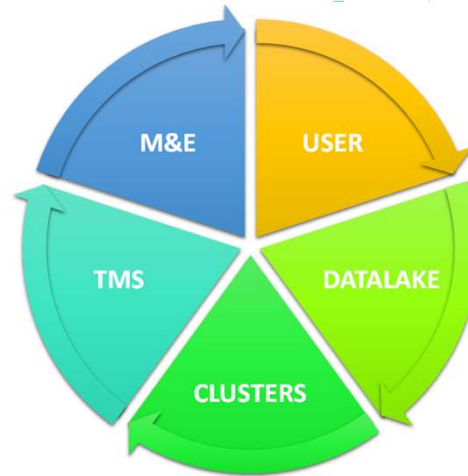
CLUSTERS DEFINITION



TMS DESIGN



M & E





EU
Energy Poverty
Advisory Hub

