

EPAH International Annual
Conference in Barcelona



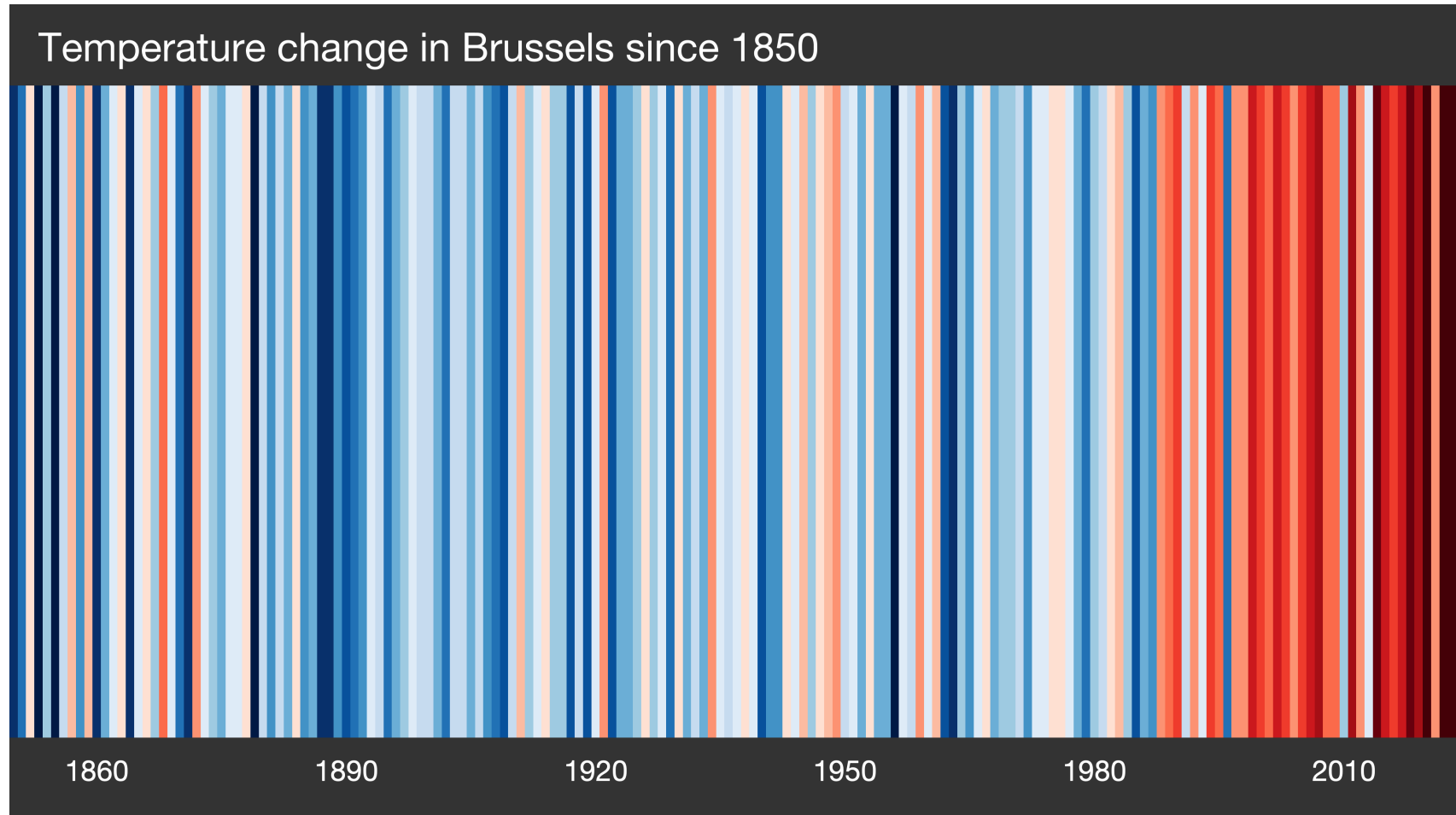
LESSONS LEARNT FROM COOLTORISE PROJECT

Raising summer energy poverty awareness
to reduce cooling needs

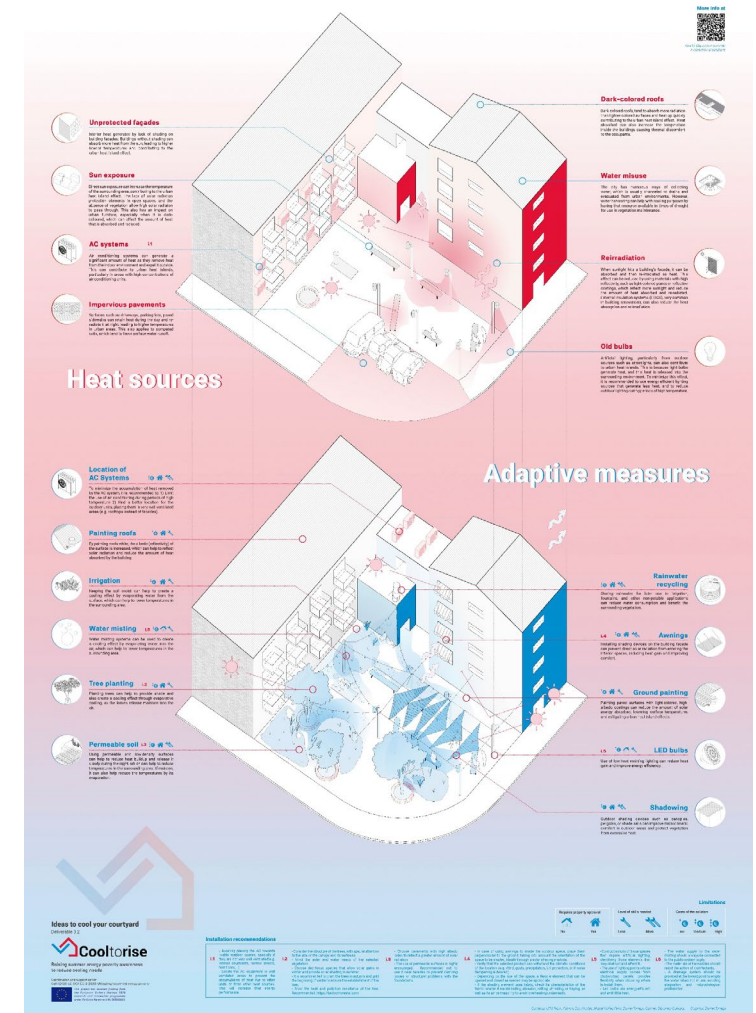
Carmen Sánchez-Guevara (Universidad Politécnica de Madrid)
carmen.sanchezguevara@upm.es



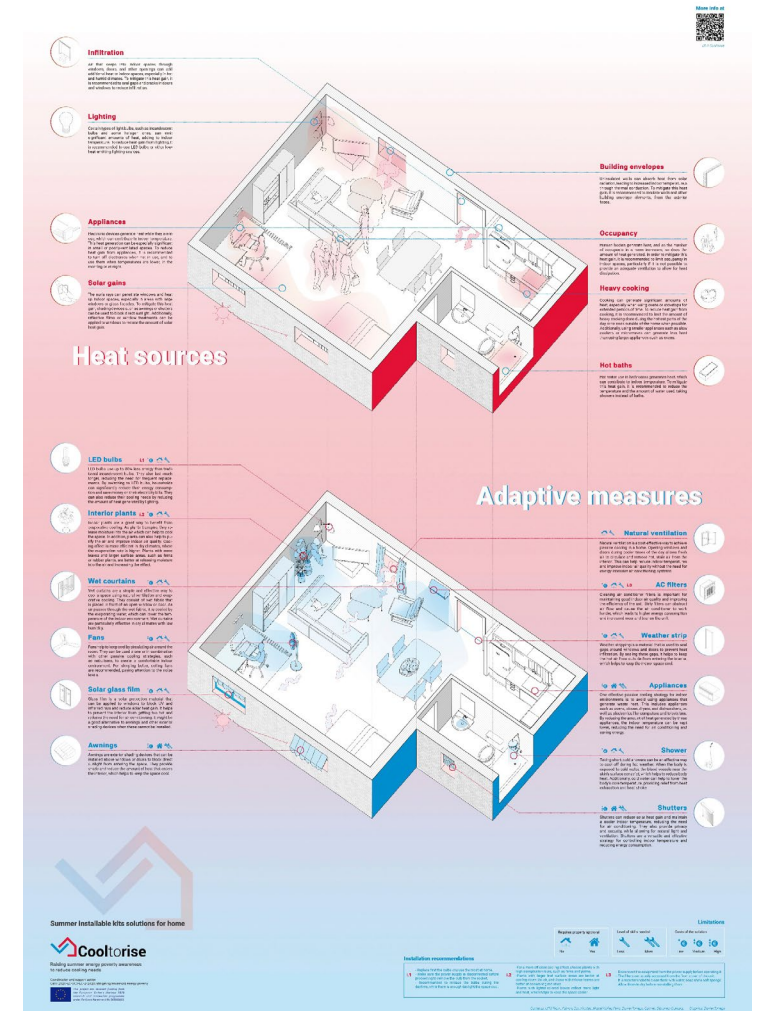
- The last few summers have broken temperature records, and the forecast is that the trend will continue. It is increasingly urgent to work on adapting the population to the heat.
- Coping with summer energy poverty is complex because it involves variables related to the built environment, the surrounding infrastructure, and the behavioral patterns of the population.



- The urban dimension is key to reducing summer energy poverty. Reducing urban heat has a positive impact on indoor thermal conditions.



- Recovering the value of the culture of heat, popular knowledge, and intergenerational learning is important for adaptation.



- Participatory assessments should be integrated into urban analyses for adaptation to overheating, given the importance of usage patterns in heat experiences.



EPAH International Annual Conference in Barcelona



www.cooltorise.eu

 twitter.com/COOLtoRISE

 facebook.com/cooltorise

 linkedin.com/in/cooltorise-project-b2a453223

