

15.10.2024

Building poverty, energy sufficiency, and best practices for sustainable communities

Caroline Duvier

BPiE – ComActivate project with: NHFHI, IWO, Eneffect, MRI, Enova, LCA, plus municipal partners: Jozsefvaros (HU), Kaisiadorys + Elektrinae (LT), Burgas (BG)



Co-funded by
the European Union

Funded by the European Union. Views and opinions expressed are however those of the author(s) only and do not necessarily reflect those of the European Union or CINEA. Neither the European Union nor CINEA can be held responsible for them.

What is ‘building poverty’?

ComAct aims to make high-impact and high-cost energy-efficient improvements in the owner occupied multi-family apartment buildings in the CEE (Central and Eastern Europe) and CIS (Commonwealth of Independent States) regions affordable and manageable for energy-poor communities as well as to create the necessary assistance conditions for lifting them out of energy poverty.

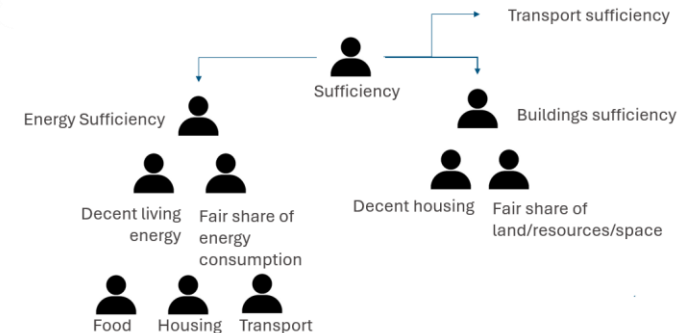
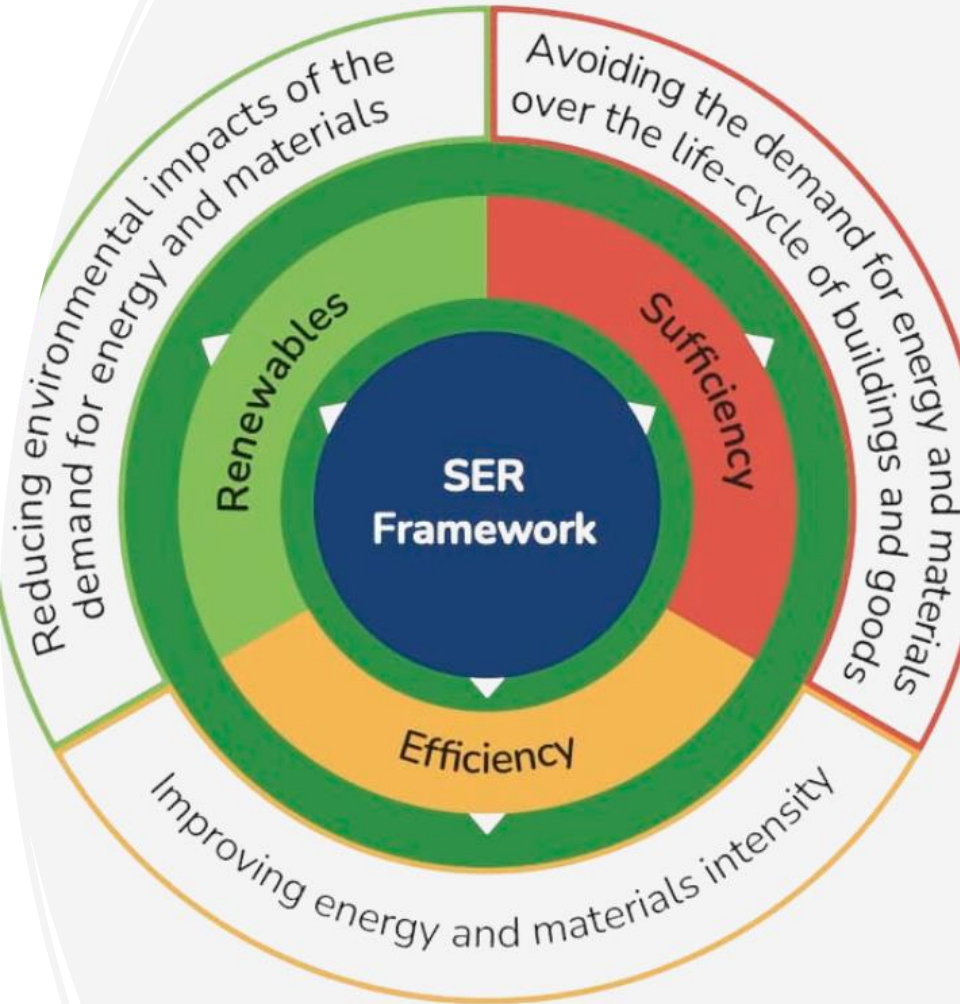
Because, even nowadays, people with very different income live together in the same buildings, ComAct wants to create a new understanding of energy poverty in the context of multi-family buildings in the CEE (Bulgaria, Hungary, Lithuania, North-Macedonia) and CIS environment (Ukraine). To do so, ComAct empowers and organises communities of energy-poor homeowners with the most relevant local actors into an ‘eco-system’ that enables the energy efficient renovation of multifamily apartment buildings inhabited by energy-poor households.

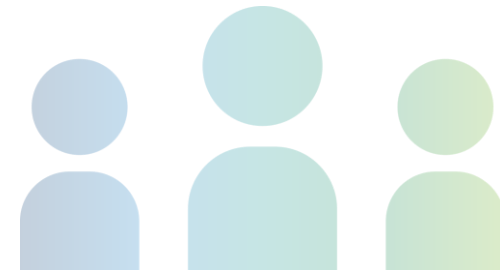
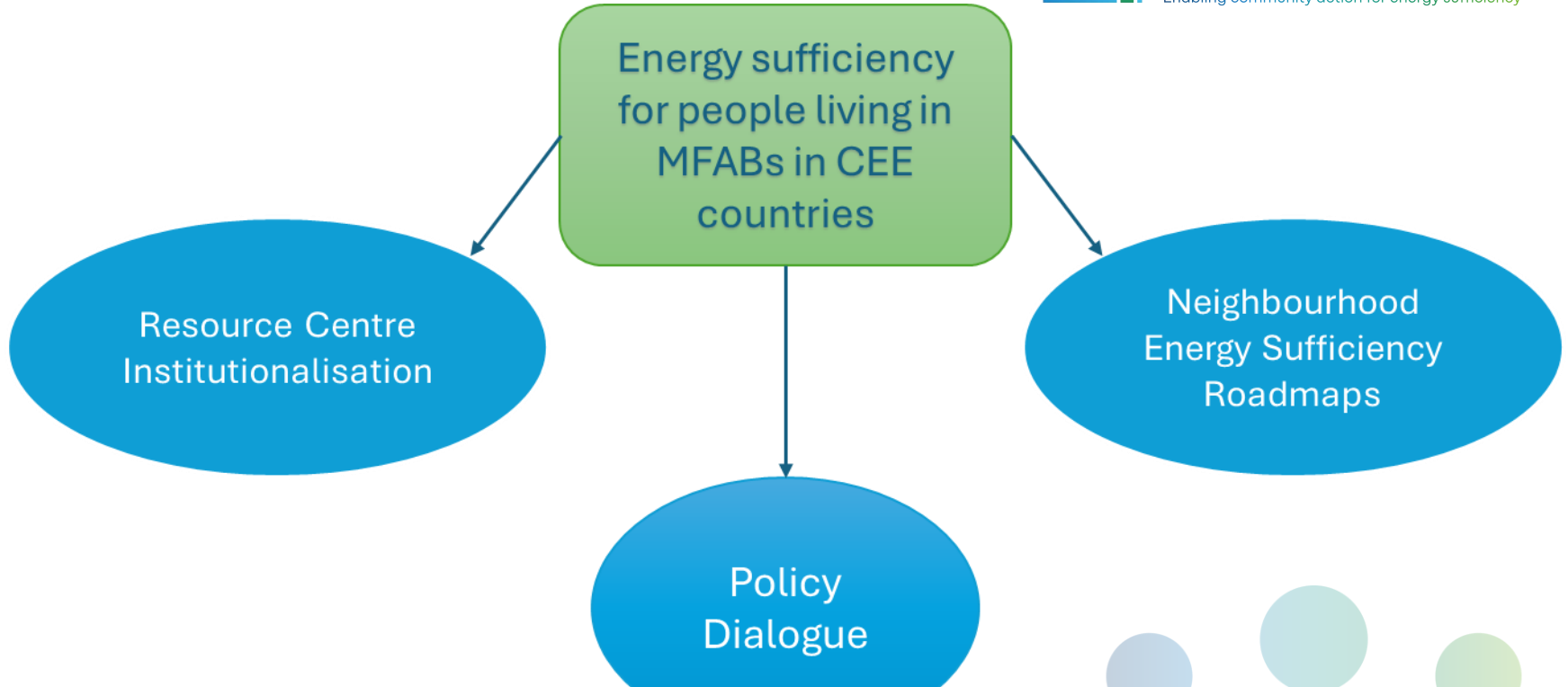
Overview Report on The Energy Poverty Concept: https://comact-project.eu/pilot_content/overview-report-on-the-energy-poverty-concept/

Energy Poverty at Building Level & Policy Recommendations: https://comact-project.eu/pilot_content/energy-poverty-at-building-level-policy-recommendations/

What is 'energy sufficiency'?

'Having enough' to meet needs
Reducing environmental burden







ComActivate

Enabling community action for energy sufficiency

Thank you!

Stay in touch:

Caroline.duvier@bpie.eu